

**Boost up Your Certification Score**

# **PUBLIC SERVICE AND LEGAL**

## **Ham-Radio-General-License**

**Ham Radio General License Certification Exam**



**For More Information – Visit link below:**

**<https://www.examsboost.com/>**

### **Product Version**

- ✓ **Up to Date products, reliable and verified.**
- ✓ **Questions and Answers in PDF Format.**

**Visit us at: <https://www.examsboost.com/test/ham-radio-general-license>**

# Latest Version: 6.0

## Question: 1

On which of the following frequencies are General class licensees prohibited from operating as control operator?

- A. 7.125 MHz to 7.175 MHz
- B. 28.000 MHz to 28.025 MHz
- C. 21.275 MHz to 21.300 MHz
- D. All of the above

**Answer: A**

Explanation:

General class licensees prohibited from operating as control operator on the 7.125 MHz to 7.175 MHz frequencies. [97.301(d)]

## Question: 2

Which of the following one-way transmissions are permitted?

- A. Unidentified test transmissions of less than 10 seconds in duration
- B. Transmissions to assist with learning the International Morse code
- C. Regular transmissions offering equipment for sale, if intended for amateur radio use
- D. All these choices are correct

**Answer: B**

Explanation:

One-way transmissions necessary to assist learning the International Morse code are permitted.

## Question: 3

What is the limit for transmitter power on the 28 MHz band for a General Class control operator?

- A. 100 watts PEP output
- B. 1000 watts PEP output
- C. 1500 watts PEP output
- D. 2000 watts PEP output

**Answer: C**

Explanation:

On the 28 MHz band, the limitation on transmitter power is 1500 watts PEP output. [97.313]

### Question: 4

When operating a US station by remote control from outside the country, what license is required of the control operator?

- A. A US operator/primary station license
- B. Only an appropriate US operator/primary license and a special remote station permit from the FCC
- C. Only a license from the foreign country, as long as the call sign includes identification of portable operation in the US
- D. A license from the foreign country and a special remote station permit from the FCC

**Answer: A**

Explanation:

A US operator/primary station license is required when operating a US station by remote control from outside the country. [97.7]

### Question: 5

What are the restrictions on messages sent to a third party in a country with which there is a Third-Party Agreement?

- A. They must relate to emergencies or disaster relief
- B. They must be for other licensed amateurs
- C. They must relate to amateur radio, or remarks of a personal character, or messages relating to emergencies or disaster relief
- D. The message must be limited to no longer than 1 minute in duration and the name of the third party must be recorded in the station log

**Answer: C**

Explanation:

Messages sent to a third party in a country with which there is a Third-Party Agreement must relate to amateur radio, or remarks of a personal character, or messages relating to emergencies or disaster relief. [97.115(a)(2), 97.117]

### Question: 6

Which mode of voice communication is most commonly used on the HF amateur bands?

- A. Frequency modulation

- B. Double sideband
- C. Single sideband
- D. Single phase modulation

**Answer: C**

Explanation:

The single-sideband mode of voice communication is most commonly used on the high frequency amateur bands. This is more because of convention than for any technical reasons.

### Question: 7

When selecting an SSB transmitting frequency, what minimum separation should be used to minimize interference to stations on adjacent frequencies?

- A. 5 Hz to 50 Hz
- B. 150 Hz
- C. 2kHz to 3kHz
- D. Approximately 6 kHz

**Answer: C**

Explanation:

When selecting an SSB transmitting frequency, 2-3 kHz of separation should be used to minimize interference to stations on adjacent frequencies.

### Question: 8

What is the best speed to use when answering a CQ in Morse code?

- A. The fastest speed at which you are comfortable copying, but no slower than the CQ
- B. The fastest speed at which you are comfortable copying, but no faster than the CQ
- C. At the standard calling speed of 10 wpm
- D. At the standard calling speed of 5 wpm

**Answer: B**

Explanation:

The best speed to use when answering a CQ in Morse code is the fastest speed at which you are comfortable copying, but no faster than the CQ.

### Question: 9

Which symbol in figure G7-1 represents a field effect transistor?

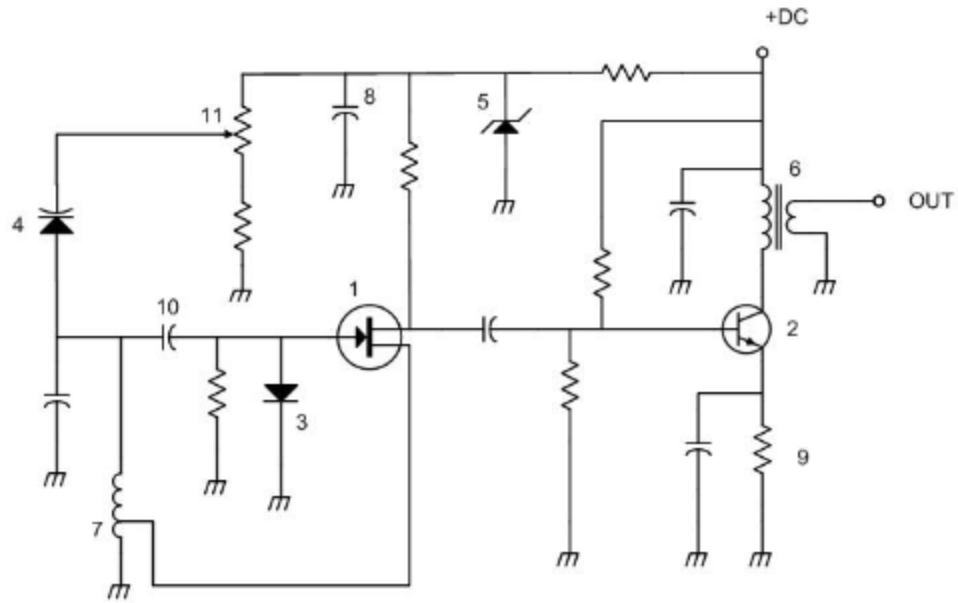


Figure G7-1

- A. Symbol 2
- B. Symbol 5
- C. Symbol 1
- D. Symbol 4

**Answer: C**

Explanation:

In figure G7-1, symbol 1 represents a field effect transistor.

### Question: 10

Which symbol in figure G7-1 represents a Zener diode?



# Thank You for Trying Our Product

For More Information – **Visit link below:**

**<https://www.examsboost.com/>**

15 USD Discount Coupon Code:

**G74JA8UF**

## FEATURES

- ✓ **90 Days Free Updates**
- ✓ **Money Back Pass Guarantee**
- ✓ **Instant Download or Email Attachment**
- ✓ **24/7 Live Chat Support**
- ✓ **PDF file could be used at any Platform**
- ✓ **50,000 Happy Customer**



Visit us at: <https://www.examsboost.com/test/ham-radio-general-license>