

# *Fortinet*

*NSE6\_FML-7.2*  
*Fortinet NSE 6 - FortiMail 7.2*



**For More Information – Visit link below:**

**<https://www.examsboost.com/>**

## **Product Version**


- ✓ Up to Date products, reliable and verified.
- ✓ Questions and Answers in PDF Format.

# Latest Version: 6.0

## Question: 1

Refer to the exhibits showing SMTP limits (Session Profile — SMTP Limits), and domain settings (Domain Settings, and Domain Settings — Other) of a FortiMail device.

### Session Profile—SMTP Limits

Session Profile	
Profile name	<input type="text" value="Example_Session"/>
Comment	<input type="text"/>
 <b>SMTP Limits</b>	
Restrict number of EHLO/HELOs per session to	<input type="text" value="3"/>
Restrict number of email per session to	<input type="text" value="10"/>
Restrict number of recipients per email to	<input type="text" value="500"/>
Cap message size (KB) at	<input type="text" value="51200"/>
Cap header size (KB) at	<input type="text" value="10240"/>
Maximum number of NOOPs allowed for each connection	<input type="text" value="10"/>
Maximum number of RSETs allowed for each connection	<input type="text" value="20"/>

## Domain Settings

### FortiMail

Domain name	<input type="text" value="example.com"/>		
Relay type	<input type="text" value="Host"/>		
SMTP server	<input type="text" value="10.29.1.45"/>	Port	<input type="text" value="25"/> [Test...]
	<input type="radio"/> Use SMTPS		
Fallback SMTP server	<input type="text"/>	Port	<input type="text" value="25"/> [Test...]
	<input type="radio"/> Use SMTPS		
	<input type="radio"/> Relay Authentication		

## Domain Settings—Other

Other	
Webmail theme	<input type="text" value="Use system settings"/>
Webmail language	<input type="text" value="--Default--"/>
Maximum message size (KB)	<input type="text" value="204800"/>
SMTP greeting (EHLO/HELO) name (as client)	<input type="text" value="Use system host name"/>
IP pool	<input type="text" value="--None--"/> Direction <input type="text" value="Delivering"/>
<input type="radio"/> Remove received header of outgoing email	
<input checked="" type="radio"/> Use global bayesian database	
<input type="radio"/> Bypass bounce verification	
<input checked="" type="radio"/> Email continuity	

Which message size limit in KB will the FortiMail apply to outbound email?

- A. 204300
- B. There is no message size limit for outbound email from a protected domain.
- C. 10240
- D. 51200

**Answer: D**

## Question: 2

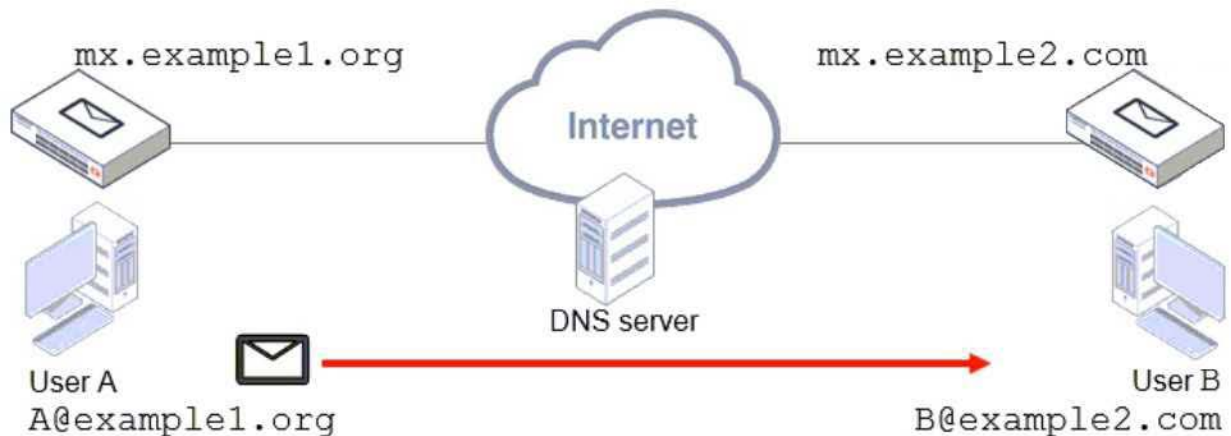
A FortiMail device is configured with the protected domain example.com. If none of the senders is authenticated, which two envelope addresses will require an access receive rule? (Choose two.)

- A. MAIL FROM: support@example.org RCPT TO: marketing@example.com
- B. MAIL FROM: mis@hosted.net RCPT TO: noc@example.com
- C. MAIL FROM: accounts@example.com RCPT TO: sales@biz.example.com
- D. MAIL FROM: training@example.com RCPT TO: students@external.org

**Answer: A, B**

## Question: 3

Refer to the exhibit, which shows a topology diagram of two separate email domains.



Which two statements correctly describe how an email message is delivered from User A to User B? (Choose two.)

- A. mx.example1.org will forward the email message to the MX record that has the lowest preference.
- B. User B will retrieve the email message using either POP3 or IMAP.
- C. User A's MUA will perform a DNS MX record lookup to send the email message.

D. The DNS server will act as an intermediary MTA.

**Answer: A, B**

### Question: 4

Refer to the exhibit which shows the output of an email transmission using a telnet session.

```
220 mx.internal.lab ESMTP Smtpd
EHLO 10.0.1.10
250-mx.internal.lab Hello [10.0.1.10]
250-SIZE 10485760
250-DSN
250-AUTH LOGIN PLAIN DIGEST-MD5 CRAM-MD5
MAIL FROM: <extuser@external.lab>
250 2.1.0 <extuser@external.lab>... Sender ok
RCPT TO: <user1@internal.lab>
250 2.1.5 <user1@internal.lab>... Recipient ok
DATA
354 Enter mail, end with "." on a line by itself
From: External User 1 <extuser@external.lab>
To: Mail User 1 <user1@internal.lab>
Date: 30 Jun 2021 12:24:54 +0100
Subject: Hello, World!
The quick brown fox jumped over the lazy dog.
.
250 Message accepted for delivery
QUIT
221 mx.internal.lab closing connection
```

What are two correct observations about this SMTP session? (Choose two.)

- A. The SMTP envelope addresses are different from the message header addresses.
- B. The "250 Message accepted for delivery" message is part of the message body.
- C. The "Subject" is part of the message header.
- D. The "220 mx.internal.lab ESMTP Smtpd" message is part of the SMTP banner.

---

**Answer: C, D**

**Question: 5**

Which two features are available when you enable HA centralized monitoring on FortiMail? (Choose two.)

- A. Policy configuration changes of all cluster members from the primary device.
- B. Mail statistics of all cluster members on the primary device.
- C. Cross-device log searches across all cluster members from the primary device.
- D. Firmware update of all cluster members from the primary device

**Answer: B, C**

---

# Thank You for Trying Our Product

For More Information – **Visit link below:**

**<https://www.examsboost.com/>**

15 USD Discount Coupon Code:

**G74JA8UF**

## FEATURES

- ✓ **90 Days Free Updates**
- ✓ **Money Back Pass Guarantee**
- ✓ **Instant Download or Email Attachment**
- ✓ **24/7 Live Chat Support**
- ✓ **PDF file could be used at any Platform**
- ✓ **50,000 Happy Customer**



Visit us at [https://www.examsboost.com/test/nse6\\_fml-7-2/](https://www.examsboost.com/test/nse6_fml-7-2/)