

Comptia

CV0-002
CompTIA Cloud+ Exam



For More Information – Visit link below:

<https://www.examsboost.com/>

Product Version

- ✓ Up to Date products, reliable and verified.
- ✓ Questions and Answers in PDF Format.

Latest Version: 15.0

Question: 1

A new browser version has been deployed to all users at a company. After the deployment, users report that they can no longer access the company's secure time-card system, which is hosted by a SaaS provider. A technician investigates and discovers a security error is received upon opening the site. If the browser is rolled back to the older version, the site is accessible again. Which of the following is the MOST likely cause of the security error users are seeing?

- A. SSL certificate expiration on the SaaS load balancers
- B. Federation issues between the SaaS provider and the company
- C. Obsolete security technologies implemented on the SaaS servers
- D. Unencrypted communications between the users and the application

Answer: C

Question: 2

A company has decided to scale its e-commerce application from its corporate datacenter to a commercial cloud provider to meet an anticipated increase in demand during an upcoming holiday. The majority of the application load takes place on the application server under normal conditions. For this reason, the company decides to deploy additional application servers into a commercial cloud provider using the on-premises orchestration engine that installs and configures common software and network configurations. The remote computing environment is connected to the on-premises datacenter via a site-to-site IPsec tunnel. The external DNS provider has been configured to use weighted round-robin routing to load balance connections from the Internet.

During testing, the company discovers that only 20% of connections completed successfully. Review the network architecture and supporting documents and fulfill these requirements:

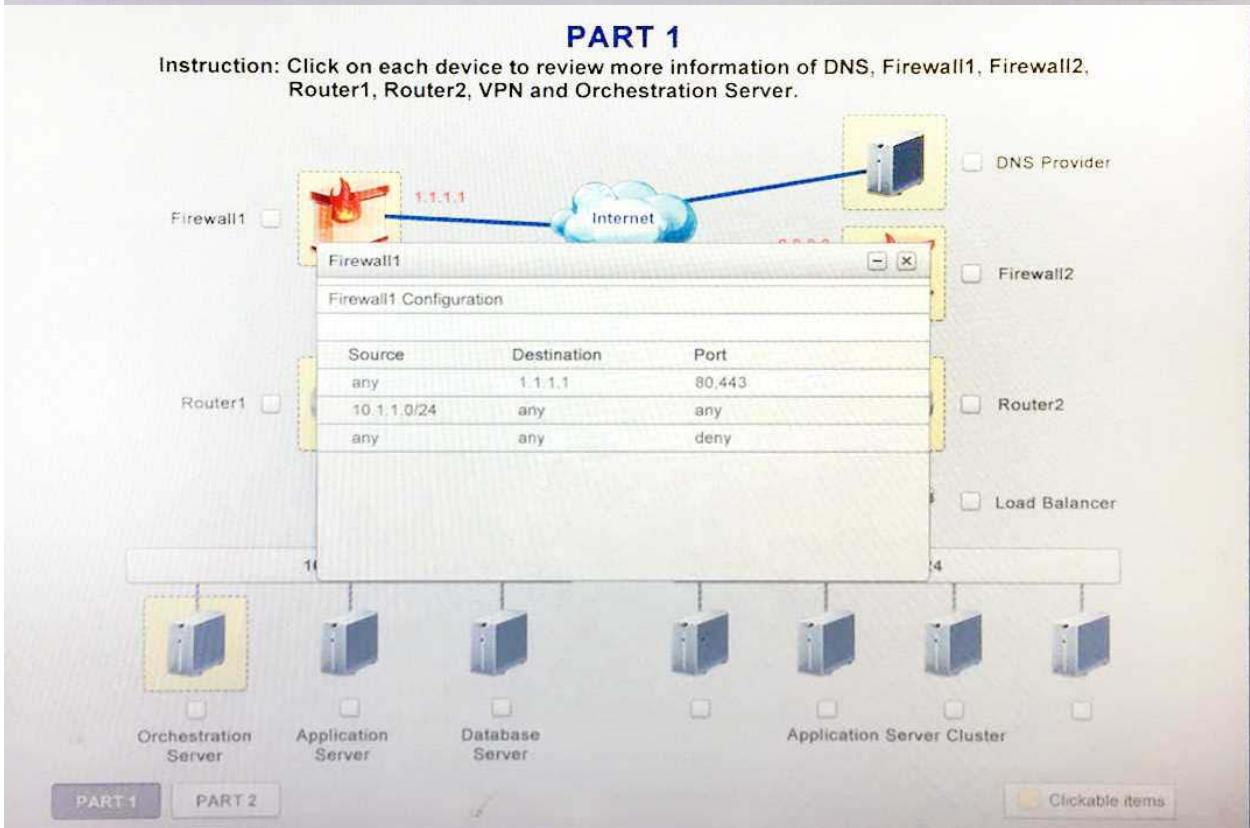
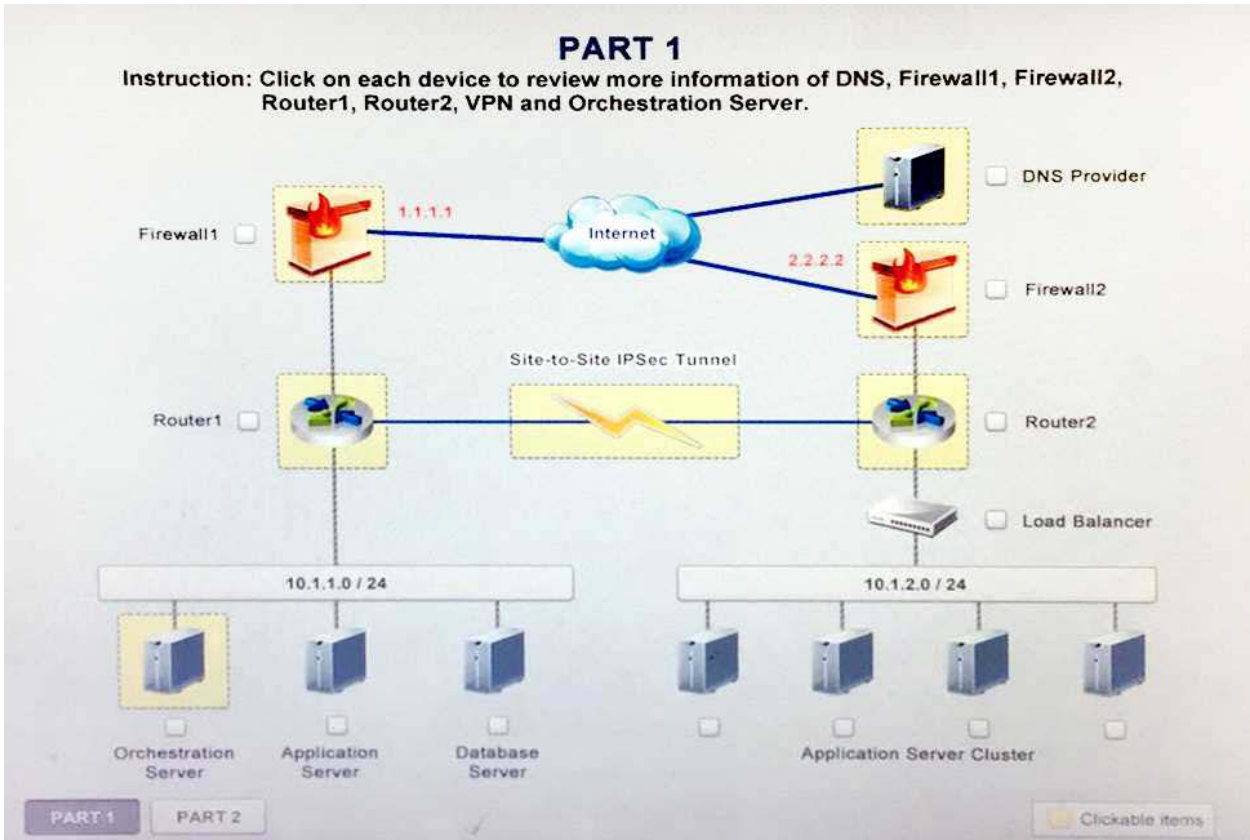
Part1:

1. Analyze the configuration of the following components: DNS, Firewall1, Firewall2, Router1, Router2, VPN and Orchestrator Server.
2. Identify the problematic device(s).

Instructions:

If at any time you would like to bring back the initial state of the simulation, please select the Reset button. When you have completed the simulation, please select the Done button to submit. Once the simulation is submitted, please select the Next button to continue.

Simulation



PART 1

Instruction: Click on each device to review more information of DNS, Firewall1, Firewall2, Router1, Router2, VPN and Orchestration Server.

The diagram illustrates a network architecture with the following components and their configurations:

- Firewall1**: Represented by a flame icon. Public IP: 1.1.1.1.
- Router1**: Represented by a router icon. Configuration details:
 - Router1 Configuration
 - Public IP: 1.1.1.1
 - Internal IP: 10.1.1.1/24
 - Site-to-Site VPN Configuration
 - Address Space: 10.1.1.0/24
 - Subnet: 255.255.255.0
 - PSK: Cloud001
 - IKE: SHA1/AES256/DH2/SA Lifetime: 28800
- DNS Provider**: Represented by a server icon.
- Firewall2**: Represented by a firewall icon.
- Router2**: Represented by a router icon.
- Load Balancer**: Represented by a server icon.
- Orchestration Server**: Represented by a server icon.
- Application Server**: Represented by a server icon.
- Database Server**: Represented by a server icon.
- Application Server Cluster**: Represented by a cluster of server icons.

The diagram also shows an **Internet** cloud connected to Firewall1, Router1, and the DNS Provider. A **VPN** connection is shown between Router1 and Router2. The bottom of the diagram features a row of server icons, each with a checkbox and a label: Orchestration Server, Application Server, Database Server, and Application Server Cluster.

PART 1

Instruction: Click on each device to review more information of DNS, Firewall1, Firewall2, Router1, Router2, VPN and Orchestration Server.

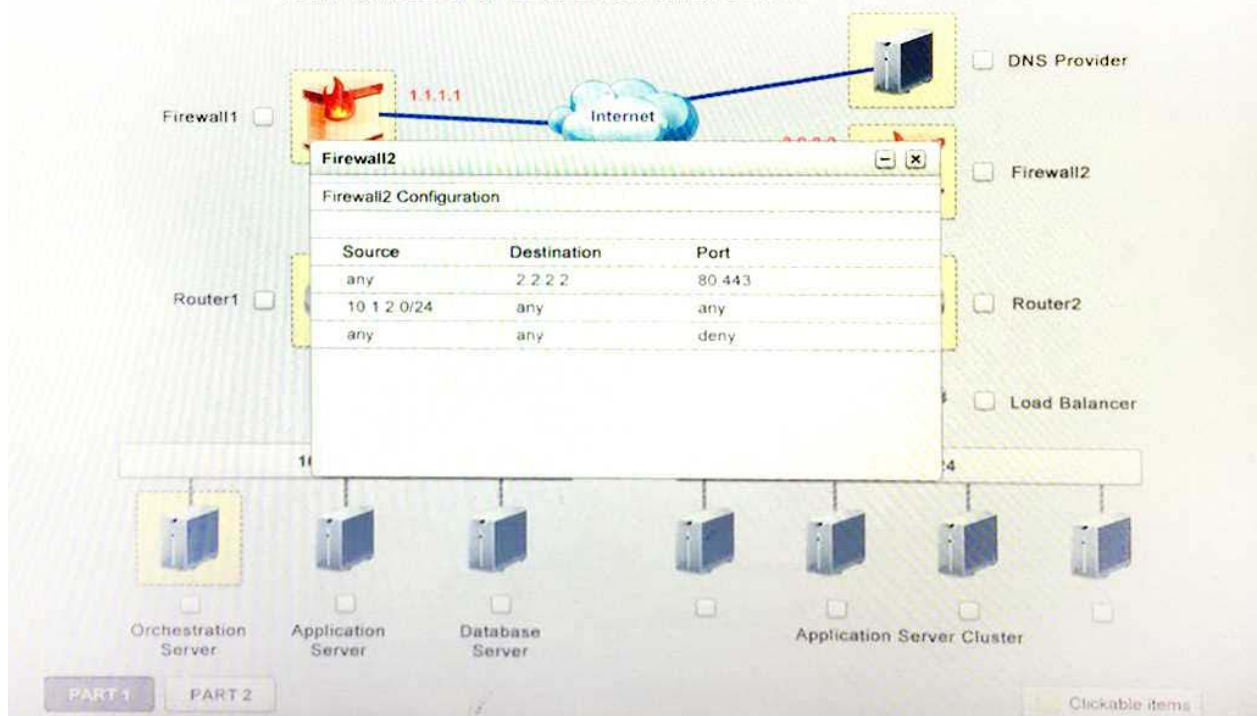
The diagram illustrates a network architecture. At the top, an 'Internet' cloud is connected to a 'DNS Provider' (server icon) and a 'Firewall1' (flame icon). 'Firewall1' is connected to 'Router1' (server icon). 'Router1' is connected to 'Router2' (server icon). 'Router2' is connected to a 'Load Balancer' (server icon). The 'Load Balancer' is connected to a row of six server icons: 'Orchestration Server', 'Application Server', 'Database Server', and 'Application Server Cluster' (represented by two icons). A central window titled 'DNS' is open, displaying the following table:

Name	Type	Value	Weight
www.mycorp.com	CNAME	onprem.mycorp.com	20%
www.mycorp.com	CNAME	cloud.mycorp.com	80%
onprem.mycorp.com	A	1.1.1.1	-
cloud.mycorp.com	A	2.2.2.2	-

Below the diagram, there are two buttons: 'PART 1' and 'PART 2'. A legend at the bottom right indicates that yellow dashed boxes around icons represent 'Clickable items'.

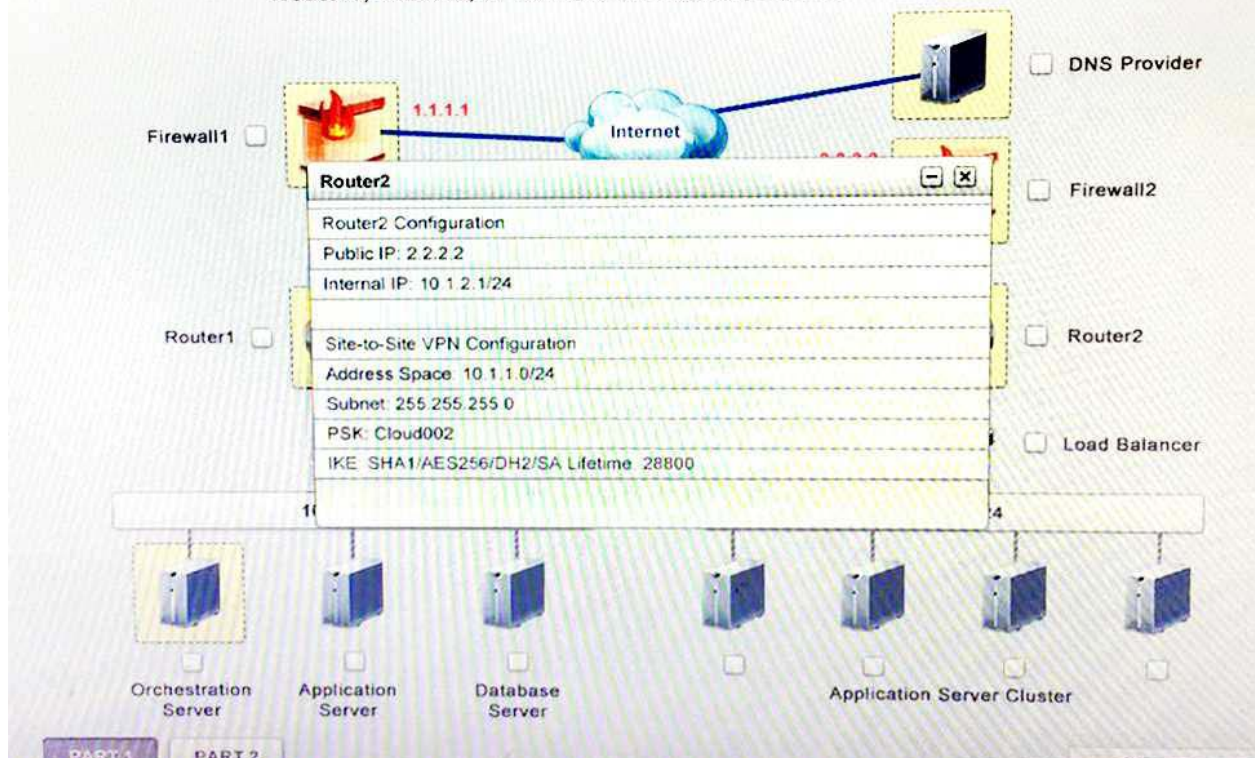
PART 1

Instruction: Click on each device to review more information of DNS, Firewall1, Firewall2, Router1, Router2, VPN and Orchestration Server.



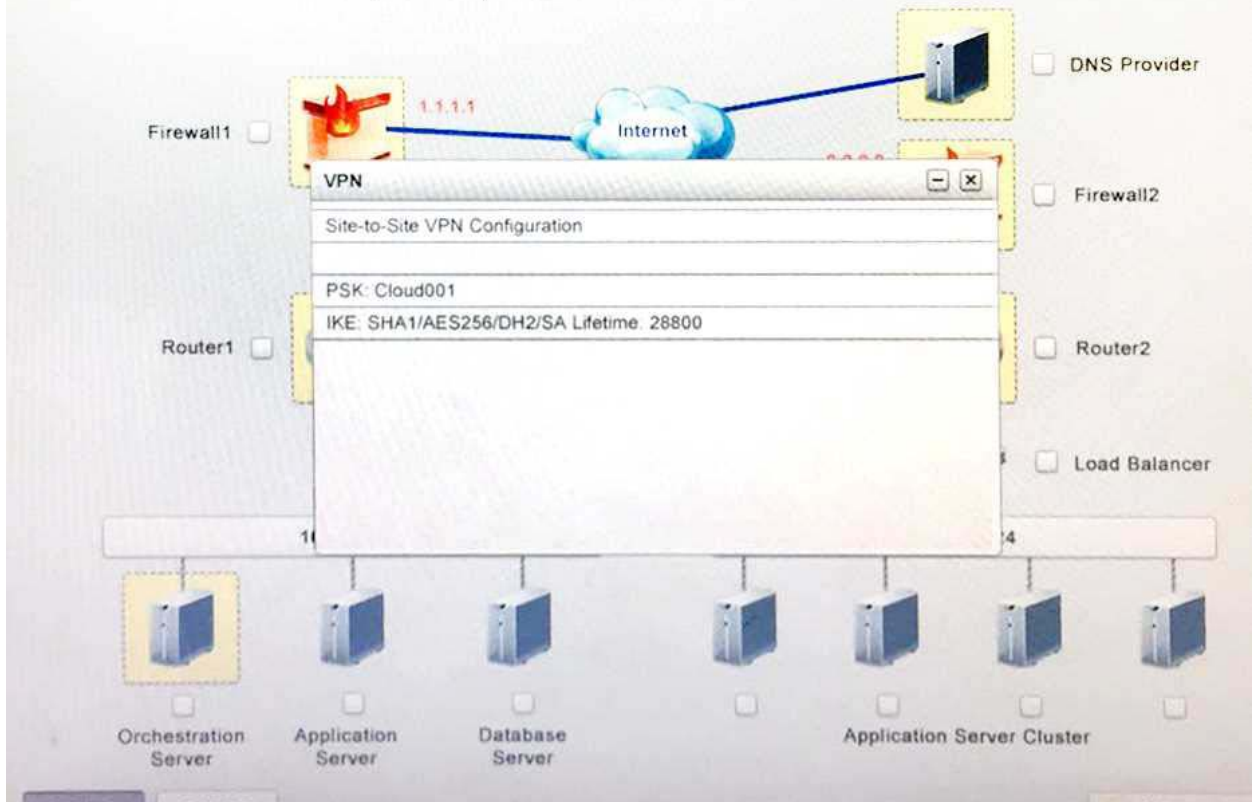
PART 1

Instruction: Click on each device to review more information of DNS, Firewall1, Firewall2, Router1, Router2, VPN and Orchestration Server.



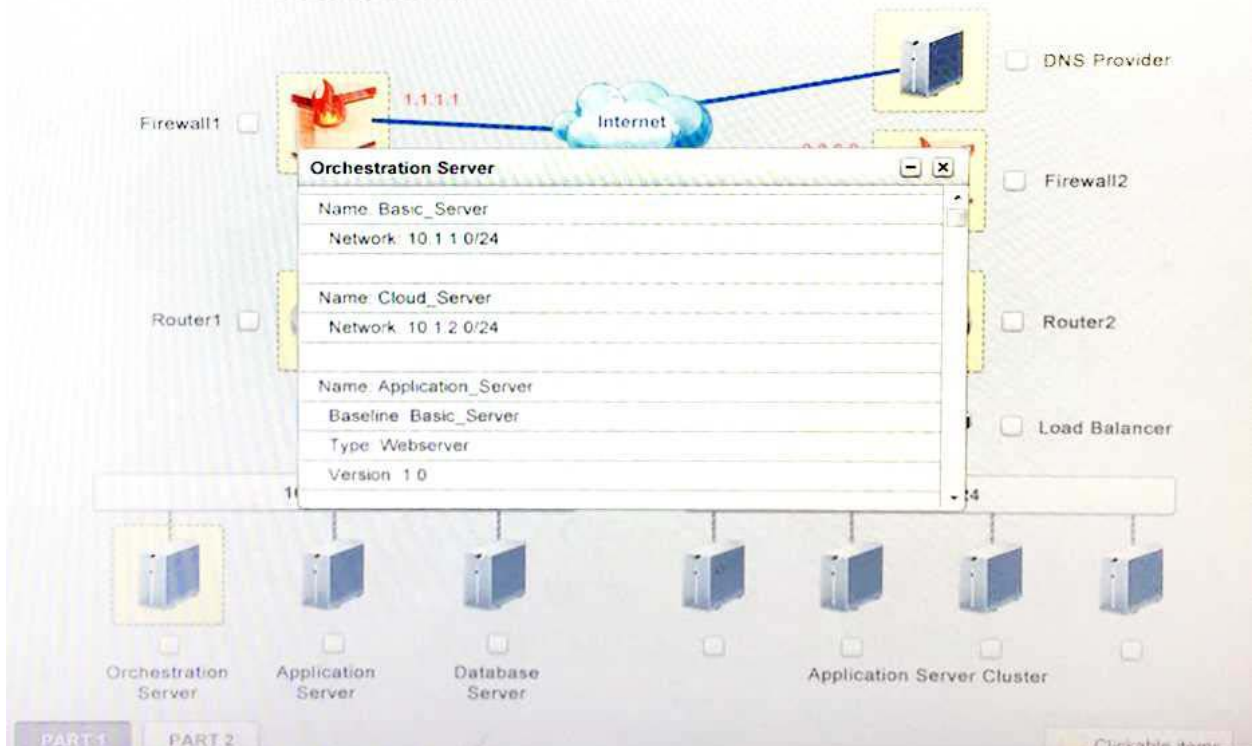
PART 1

Instruction: Click on each device to review more information of DNS, Firewall1, Firewall2, Router1, Router2, VPN and Orchestration Server.

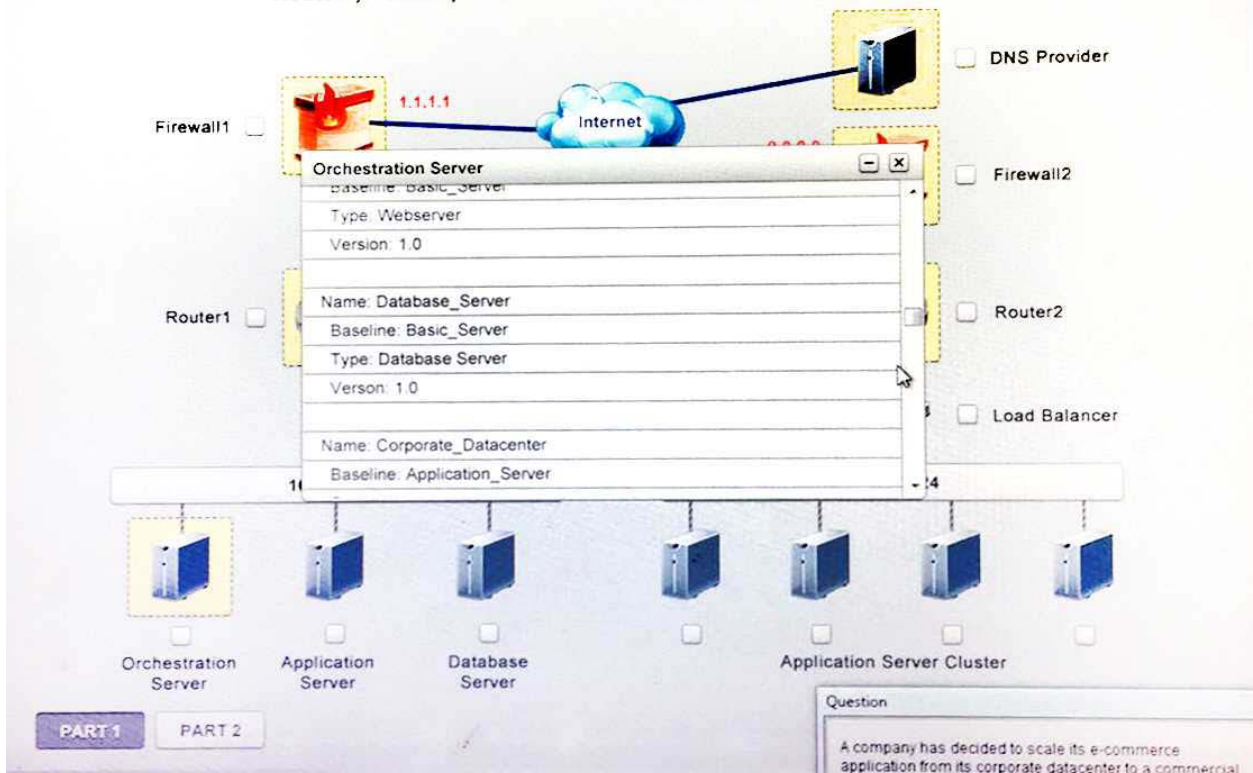


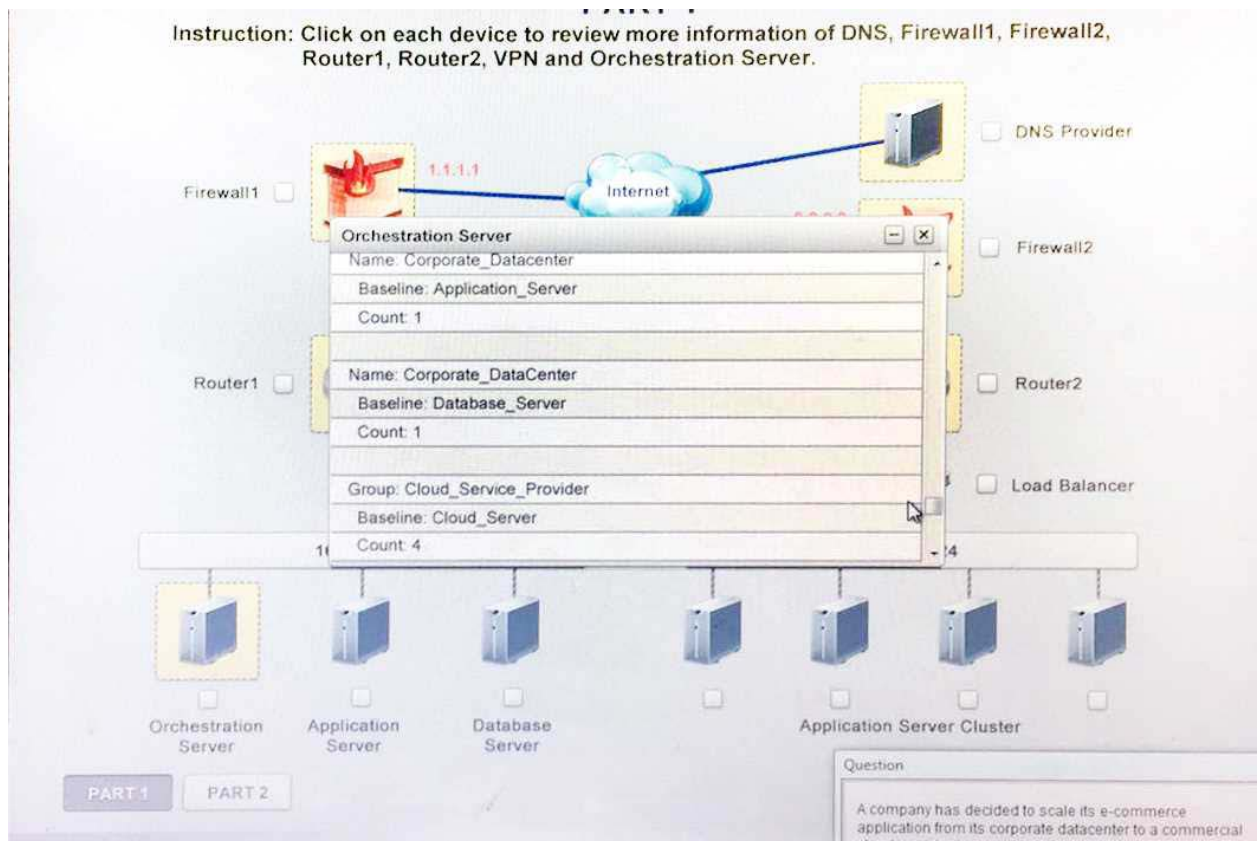
PART 1

Instruction: Click on each device to review more information of DNS, Firewall1, Firewall2, Router1, Router2, VPN and Orchestration Server.



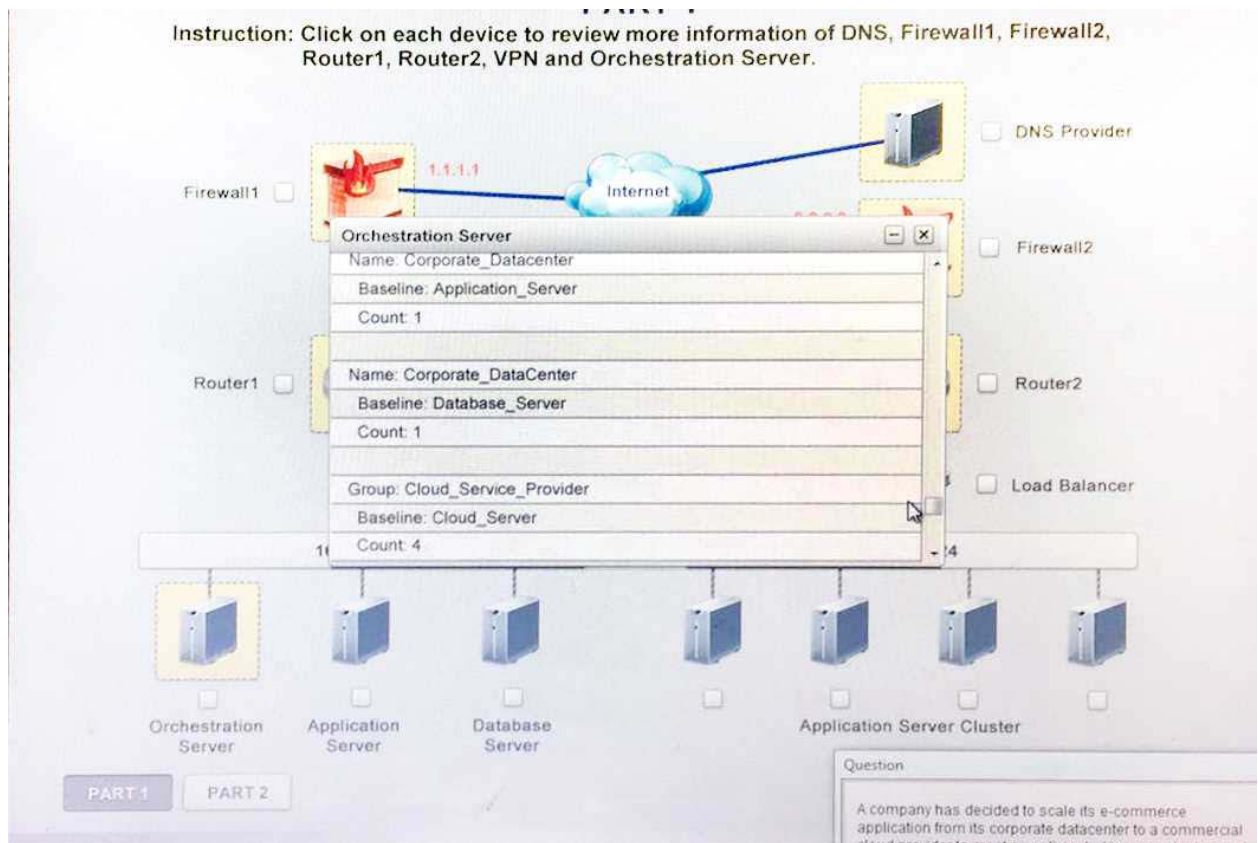
Router1, Router2, VPN and Orchestration Server.





Answer: See the solution below.

Solution given below with details.



Question: 3

DRAG DROP

A hosted file share was infected with CryptoLocker and now root cause analysis needs to be performed. Place the tasks in the correct order according to the troubleshooting methodology.

1		Establish a plan of action to resolve the problem and implement remediation
2		Establish a theory of probable cause
3		Document findings and outcomes
4		Identify the problem
5		Test the theory to determine cause
6		Verify full system functionality

Answer:

1	Identify the problem	Establish a plan of action to resolve the problem and implement remediation
2	Establish a theory of probable cause	Establish a theory of probable cause
3	Test the theory to determine cause	Document findings and outcomes
4	Establish a plan of action to resolve the problem and implement remediation	Identify the problem
5	Verify full system functionality	Test the theory to determine cause
6	Document findings and outcomes	Verify full system functionality

Question: 4

A company is seeking a new backup solution for its virtualized file servers that fits the following characteristics:

The files stored on the servers are extremely large.

Existing files receive multiple small changes per day.

New files are only created once per month.

All backups are being sent to a cloud repository.

Which of the following would BEST minimize backup size?

- A. Local snapshots
- B. Differential backups
- C. File-based replication
- D. Change block tracking

Answer: B

Reference: <https://www.acronis.com/en-us/blog/posts/tips-tricks-better-business-backup-and-recoveryworld-backup-day>

Question: 5

A company has deployed a four-node cluster in a COLO environment with server configurations listed below. The company wants to ensure there is 50% overhead for failover and redundancy. There are currently eight VMs running within the cluster with four vCPUs x32GB each. The company wants to better utilize its resources within the cluster without compromising failover and redundancy.

White Label Servers	Configuration (CPU x Memory GB)
Server 1	16x128
Server 2	16x128
Server 3	16x128
Server 4	16x128

Given the information above, which of the following should a cloud administrator do to BEST accommodate failover and redundancy requirements?

- A. Ensure hyperthreading is being utilized with physical server CPUs.
- B. Ensure dynamic resource allocation is being utilized.
- C. Overcommit memory, and the systems will allocate resources as required.
- D. Set hard limits for VM resources and turn on hyperthreading.

Answer: B

Thank You for Trying Our Product

Discount Coupon Code:

EXAMSBOOST10

For More Information – **Visit link below:**

<http://www.examsboost.com/>



FEATURES

- ✓ **90 Days Free Updates**
- ✓ **Money Back Pass Guarantee**
- ✓ **Instant Download or Email**

Attachment

- ✓ **24/7 Live Chat Support**
 - ✓ **PDF file could be used at any**
- Platform**

- ✓ **50,000 Happy Customer**